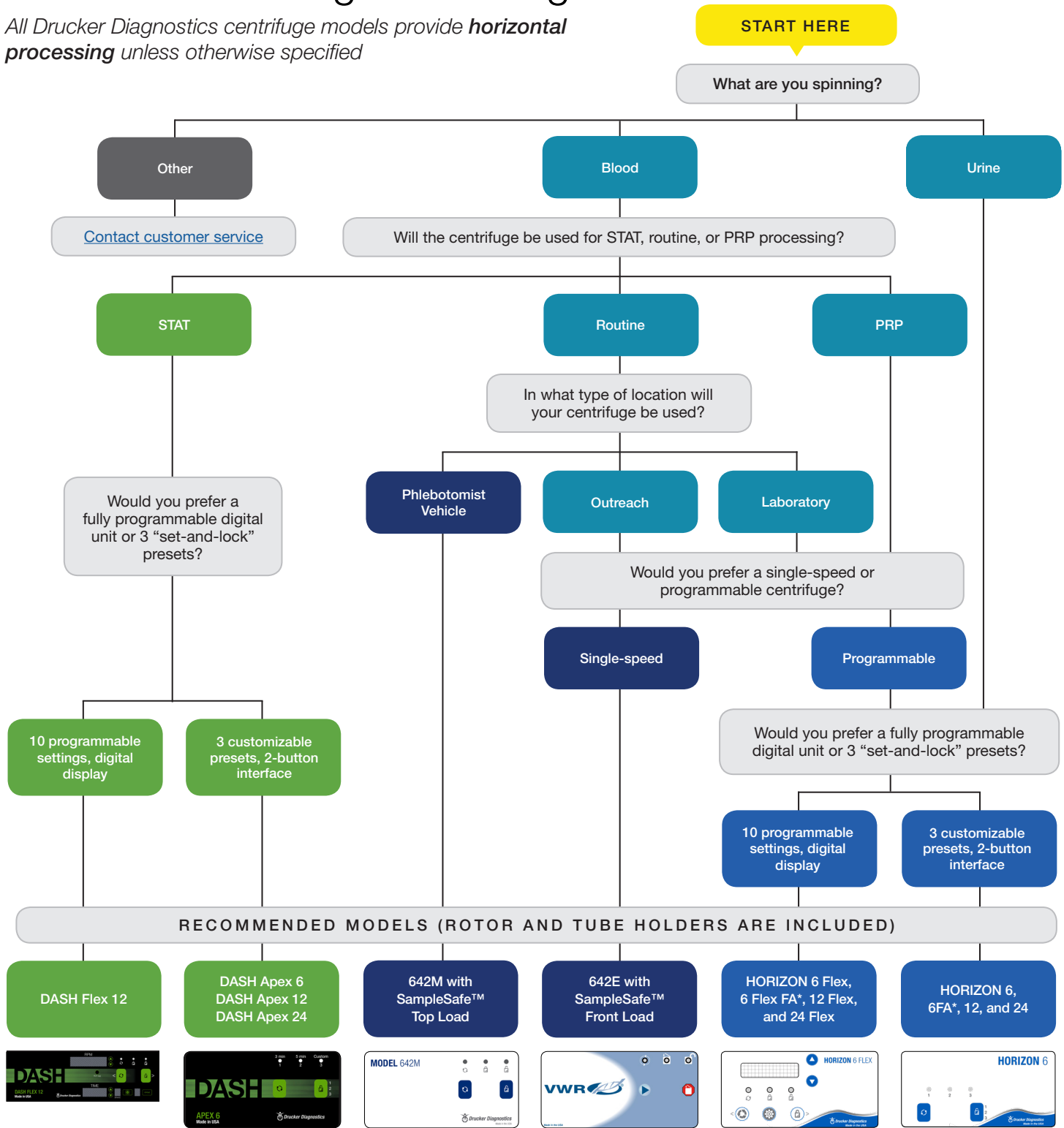
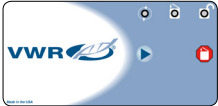




Guide to Selecting a Centrifuge

All Drucker Diagnostics centrifuge models provide **horizontal processing** unless otherwise specified



RECOMMENDED MODELS (ROTOR AND TUBE HOLDERS ARE INCLUDED)

DASH Flex 12	DASH Apex 6 DASH Apex 12 DASH Apex 24	642M with SampleSafe™ Top Load	642E with SampleSafe™ Front Load	HORIZON 6 Flex, 6 Flex FA*, 12 Flex, and 24 Flex	HORIZON 6, 6FA*, 12, and 24
					

SELECT BY TUBE SIZE	RECOMMENDED MODELS	TUBE CAPACITY	NOTES
75-100 mm	All	As stated	6, 12, 24 indicates capacity
125 mm*	HORIZON 24 and 24 Flex HORIZON 6 FA**, 6 Flex FA**, 614B**	12 tubes 6 tubes	614B is not suitable for urine, requires alternate tube holders
50 mL	HORIZON 24 and 24 Flex	6 tubes	Requires optional buckets
Small tubes with extenders	All DASH models	As stated	Microtainer®, MiniCollect®

*capable of accommodating Kova® 12 mL tubes

**fixed angle processing

Request a Free 30 Day Evaluation (U.S. Only)

CENTRIFUGE MODEL	VWR PART NUMBER
DASH Apex 6	10852-186
DASH Apex 12	75854-376
DASH Flex 12	76300-140
DASH Apex 24	75854-378
HORIZON 6	76300-116
HORIZON 6 FA*	76300-126
HORIZON 12	76300-132
HORIZON 24	76300-136
HORIZON 6 Flex	76300-128
HORIZON 6 Flex FA*	76300-130
HORIZON 12 Flex	76300-134
HORIZON 24 Flex	76300-138
Model 642E	95037-278
Model 642M	
Model 642B	97034-714
Model 614B*	51000-004

**fixed angle processing*

Questions? Contact Drucker Diagnostics Now

Drucker Diagnostics Headquarters

168 Bradford Drive
Port Matilda, PA 16870 USA

Drucker Diagnostics Manufacturing

200 Shady Lane, Suite 170
Philipsburg, PA 16866 USA

General Contact

+1-866-265-1486 (US Toll-Free)
+1-814-692-7661
Fax: +1-814-692-7662

Customer Service: customerservice@druckerdiagnostics.com

Sales: sales@druckerdiagnostics.com

Support: support@druckerdiagnostics.com

Accounting: accounting@druckerdiagnostics.com



druckerdiagnostics.com
sales@druckerdiagnostics.com

+1-866-265-1486 (U.S. only)
+1-814-692-7661