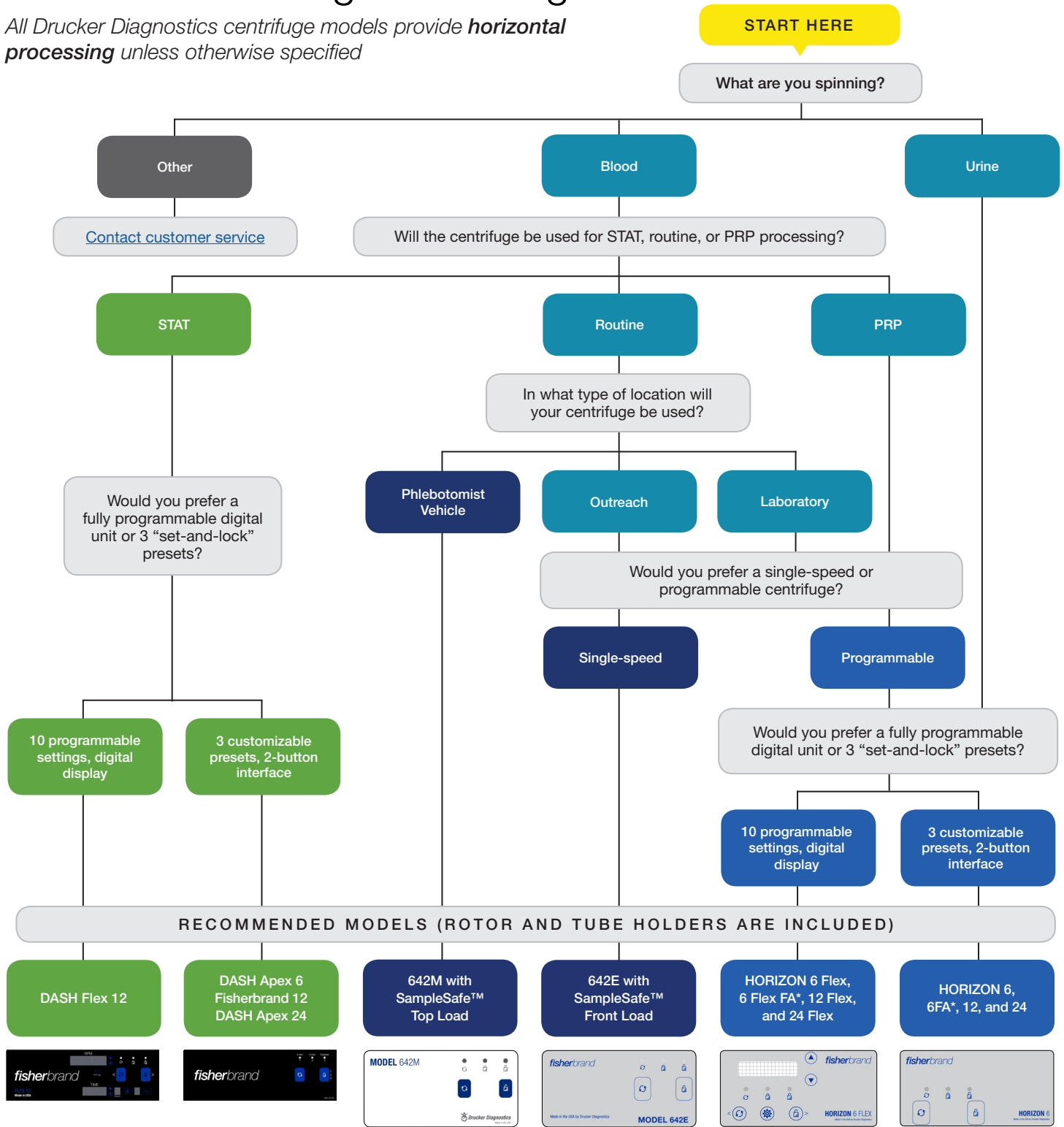


# Guide to Selecting a Centrifuge

All Drucker Diagnostics centrifuge models provide **horizontal processing** unless otherwise specified



SELECT BY TUBE SIZE	RECOMMENDED MODELS	TUBE CAPACITY	NOTES
75-100 mm	All	As stated	6, 12, 24 indicates capacity
125 mm*	HORIZON 24 and 24 Flex HORIZON 6 FA**, 6 Flex FA**, 614B**	12 tubes 6 tubes	614B is not suitable for urine, requires alternate tube holders
50 mL	HORIZON 24 and 24 Flex	6 tubes	Requires optional buckets
Small tubes with extenders	All DASH models	As stated	Microtainer®, MiniCollect®

\*capable of accommodating Kova® 12 mL tubes

\*\*fixed angle processing

## Request a Free 30 Day Evaluation (U.S. Only)

CENTRIFUGE MODEL	FISHER PART NUMBER
<a href="#">DASH Apex 6</a>	<a href="#">22029440</a>
<a href="#">DASH Apex 12</a>	<a href="#">22029557A</a>
<a href="#">DASH Flex 12</a>	<a href="#">22029678</a>
<a href="#">DASH Apex 24</a>	<a href="#">22029445</a>
<a href="#">HORIZON 6</a>	<a href="#">22029670</a>
<a href="#">HORIZON 6 FA*</a>	<a href="#">22029671</a>
<a href="#">HORIZON 12</a>	<a href="#">22029674</a>
<a href="#">HORIZON 24</a>	<a href="#">22029675</a>
<a href="#">HORIZON 6 Flex</a>	<a href="#">22029672</a>
<a href="#">HORIZON 6 Flex FA*</a>	<a href="#">22029673</a>
<a href="#">HORIZON 12 Flex</a>	<a href="#">22029676</a>
<a href="#">HORIZON 24 Flex</a>	<a href="#">22029677</a>
<a href="#">Model 642E</a>	<a href="#">22029375</a>
<a href="#">Model 642M</a>	<a href="#">22029587</a>
<a href="#">Model 642B</a>	<a href="#">22029379</a>
<a href="#">Model 614B*</a>	<a href="#">22029380</a>

*\*fixed angle processing*

## Questions? Contact Drucker Diagnostics Now

### Drucker Diagnostics Headquarters

168 Bradford Drive  
Port Matilda, PA 16870 USA

### Drucker Diagnostics Manufacturing

200 Shady Lane, Suite 170  
Philipsburg, PA 16866 USA

### General Contact

+1-866-265-1486 (US Toll-Free)  
+1-814-692-7661  
Fax: +1-814-692-7662

**Customer Service:** [customerservice@druckerdiagnostics.com](mailto:customerservice@druckerdiagnostics.com)

**Sales:** [sales@druckerdiagnostics.com](mailto:sales@druckerdiagnostics.com)

**Support:** [support@druckerdiagnostics.com](mailto:support@druckerdiagnostics.com)

**Accounting:** [accounting@druckerdiagnostics.com](mailto:accounting@druckerdiagnostics.com)



[druckerdiagnostics.com](http://druckerdiagnostics.com)  
[sales@druckerdiagnostics.com](mailto:sales@druckerdiagnostics.com)

+1-866-265-1486 (U.S. only)  
+1-814-692-7661