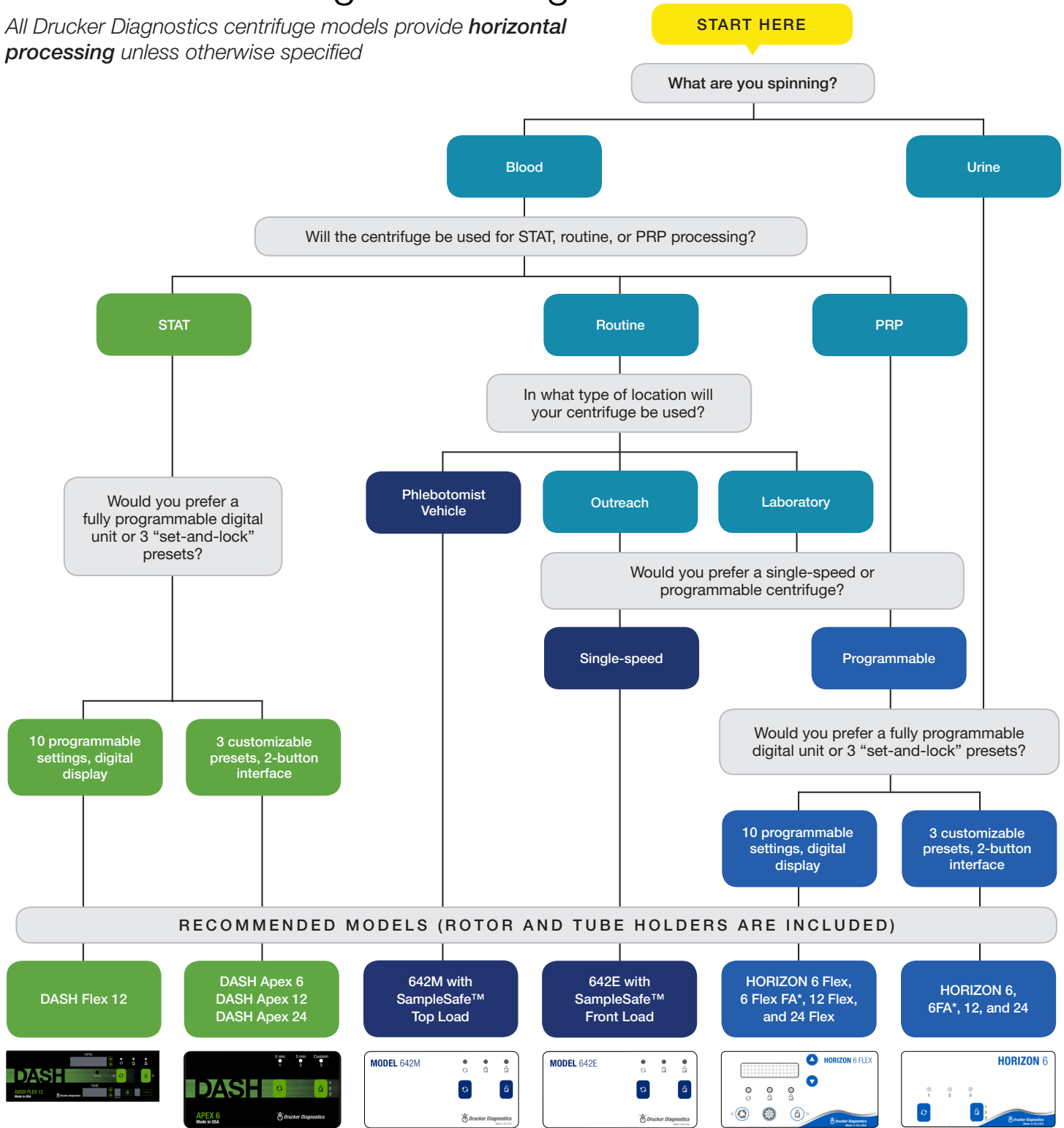
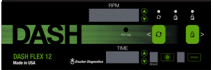







# Guide to Selecting a Centrifuge

All Drucker Diagnostics centrifuge models provide **horizontal processing** unless otherwise specified



**RECOMMENDED MODELS (ROTOR AND TUBE HOLDERS ARE INCLUDED)**

<b>DASH Flex 12</b>	<b>DASH Apex 6</b> DASH Apex 12 DASH Apex 24	<b>642M with SampleSafe™ Top Load</b>	<b>642E with SampleSafe™ Front Load</b>	<b>HORIZON 6 Flex, 6 Flex FA*, 12 Flex, and 24 Flex</b>	<b>HORIZON 6, 6FA*, 12, and 24</b>
					

SELECT BY TUBE SIZE	RECOMMENDED MODELS	TUBE CAPACITY	NOTES
75-100 mm	All	As stated	6, 12, 24 indicates capacity
125 mm*	HORIZON 24 and 24 Flex HORIZON 6 FA**, 6 Flex FA**, 614B**	12 tubes 6 tubes	614B is not suitable for urine, requires alternate tube holders
50 mL	HORIZON 24 and 24 Flex	6 tubes	Requires optional buckets
Small tubes with extenders	All DASH models	As stated	Microtainer®, MiniCollect®

\*capable of accommodating Kova® 12 mL tubes      \*\*fixed angle processing

## Free 30 Day Evaluation (U.S. Only)

CENTRIFUGE MODEL	DRUCKER PART NUMBER
DASH Apex 6	00-076-009-004
DASH Apex 12	00-083-009-003
DASH Flex 12	00-183-009-000
DASH Apex 24	00-084-009-005
HORIZON 6	00-276-009-000
HORIZON 6 FA*	00-276-009-001
HORIZON 12	00-283-009-000
HORIZON 24	00-284-009-000
HORIZON 6 Flex	00-376-009-000
HORIZON 6 Flex FA*	00-376-009-001
HORIZON 12 Flex	00-383-009-000
HORIZON 24 Flex	00-384-009-000
Model 642E	00-018-009-001
Model 642M	00-077-009-000
Model 642B	00-016-009-001
Model 614B*	00-004-009-001

*\*fixed angle processing*