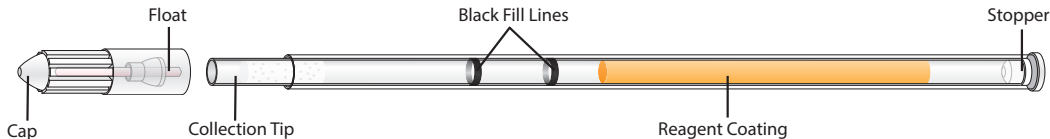
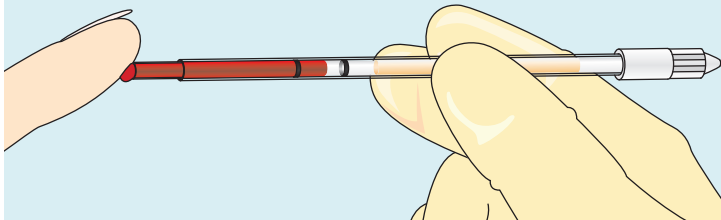


### TUBE PREPARATION



#### 1a. Fill Tube - Capillary

Touch the collection tip of the STAR Tube to a sample, as shown. **Fill** between the two black fill lines.

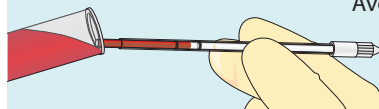


#### 1b. Fill Tube - Venous



Gently mix sample by inverting the EDTA venous sample 12-15 times immediately before filling the STAR Tube.

Tilt venous sample and place the collection tip of the STAR Tube in the sample, as shown below. Fill between the two black fill lines.

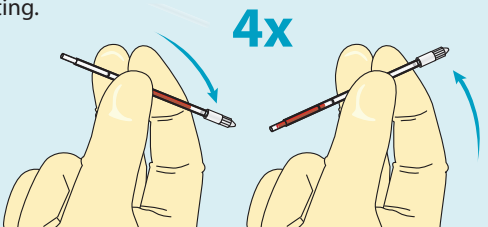


Avoid contact with outer plastic sleeve of the STAR Tube, as contact may prevent improper filling and/or mixing.

#### 2. Rock Tube

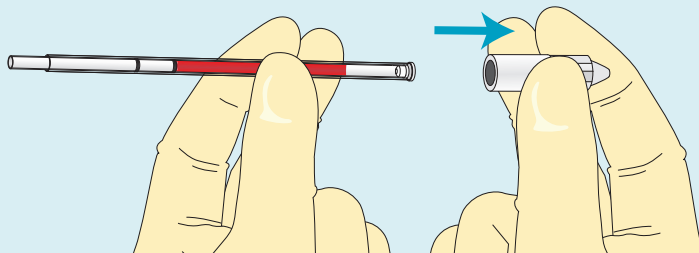
Allow sample to pass completely through the orange reagent coating. Rock the tube back and forth at least 4 times to mix the sample with the coating.

Avoid contact with the white stopper during rocking, as this may result in sample errors.



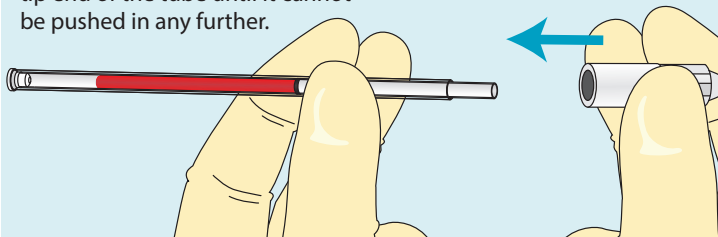
#### 3. Remove Cap

Remove the cap from the stopper end of the STAR Tube.



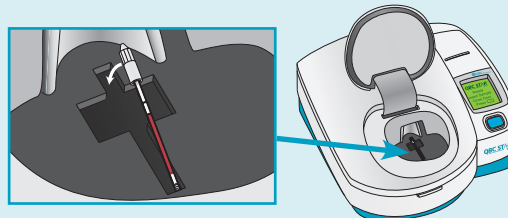
#### 4. Replace Cap

Press the cap onto the collection tip end of the tube until it cannot be pushed in any further.



#### 5. Place in Analyzer

Insert the STAR Tube into the QBC STAR analyzer as shown below.

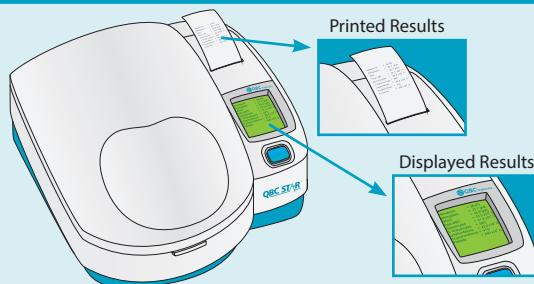


Close the analyzer door and press the blue "STAR" button to begin testing.

#### 7. Obtain Results

When the test is complete, the results are automatically displayed and printed.

View displayed results prior to opening door, as test results are cleared from the display when the analyzer door is opened.



When finished, open the analyzer door, remove the sample, and discard the tube in a biohazard container.

